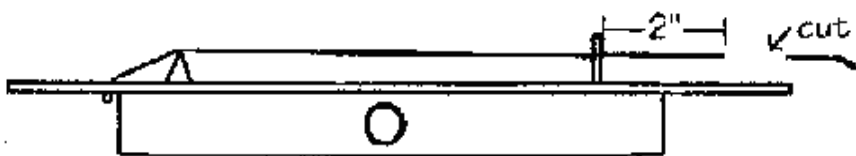


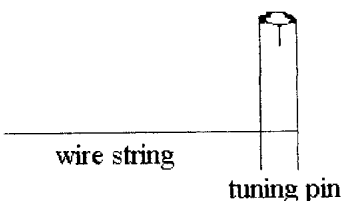
Restringing and Tuning the Plucked Psaltery

Following these six easy steps will help in restringing your instrument.

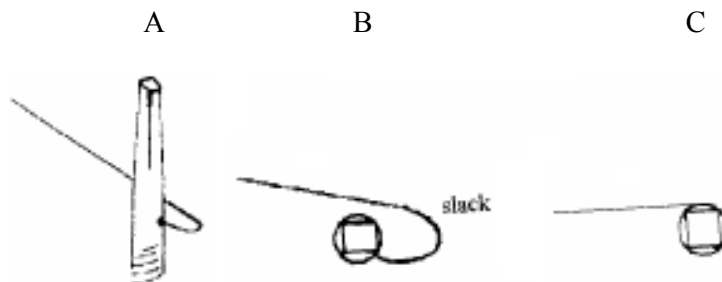
1. Poke string through string hole, from the backside of the instrument, pulling it a little taunt (the ball end will be touching the wood underneath). Stretch the string (wire) across the instrument to the tuning pin and clip off the excess so it measures about 2 inches beyond the tuning pin as shown below.



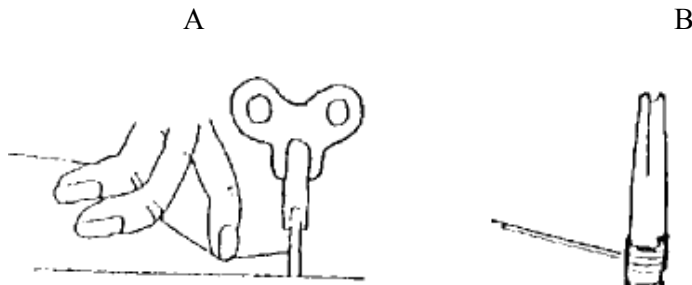
2. Thread the wire through the pin so that the end just goes through the other side of the pin, as shown below.



3. Using the tuning key, turn the pin clockwise about one-half turn before applying tension to the wire. Pull lightly on the wire to "SET" it in the pin (This will put a sharp kink in the wire where it enters the hole). Try to hide the end of the string inside the tuning pin. It looks nicer and helps prevent you from pricking your fingers or snagging clothing when you handle your instrument



4. Keeping tension on the wire at all times, turn the pin clockwise until there is no slack and the wire is tight. (Do not over tighten or the string will brake).



5. Install the strings, using the below chart for string size and placement.

The three longest:	.018"
The next four:	.016"
The next four:	.014"
The four shortest:	.012"

6. Tune the Psaltery, beginning with middle C for the lowest string. Then go up the Scale matching the white keys on a piano, for two octaves above middle C. Or purchase an electronic tuner from a music store or online

